

BEFORE USING THE WRENCH

BATTERY INSTALLATION

- Remove the battery cover.
- Insert two AA batteries matching the +/- polarities of the battery to the battery compartment.
- Put on the battery cap and rotate it tightly according to the following figures.

POWER ON AND RESETTING THE WRENCH

- Press **(C)** to power on the digital torque wrench.
- Usually press **(C)** to reset the digital torque wrench before using it.



ATTENTION:
If an external force is applied to the torque wrench during power-on/reset or wake up period, an initial torque offset will exist in the memory.

ACTIVATION DURING SLEEP MODE

- The wrench will auto sleep after about 2 minutes idle for power saving. Press **(C)** to wake up the wrench during the sleep mode.

CAUTIONS:

During communication period (**Send** appears), the sleep function is disabled.

RESETTING THE WRENCH

- To reset the wrench, loosen the battery cap then tighten it to re-start.
- After reset, remember to press **(C)**.

LOW BATTERY VOLTAGE PROTECTION

- If the battery serial voltage is under 2.3 volts, the wrench will display a battery symbol and then turn off after a while.

SET UP



- Power On/Clear
- Unit Selection/Setting
- Up/Down Button
- Pre-Setting No.

STEP 1: PRE-SETTING NO.



Pre-setting: M1



Pre-setting: M2



Pre-setting: M9

- Note:**
- If **Er0** is appeared, that means this wrench has ever been applied more than 110% of maximum torque.
 - The maximum capacity for "Pre-setting No." is 9 sets.
 - The "Pre-Setting No." is in sequential.

STEP 2: UNIT SELECTION



Pre-setting: Unit: N.m



Pre-setting: Unit: in.lb



Pre-setting: Unit: ft.lb



Pre-setting: Unit: kg.cm

STEP 4: PEAK HOLD /TRACK MODE SELECTION



Track Mode



Set Peak/Track mode



Set Peak/Track mode



Set Peak/Track mode



Record No.



Clear Record



Peak Hold Mode

- Note:**
- Please skip this procedure and continue to the next step.

STEP 3: SET TORQUE VALUE



Pre-setting Torque Value



Increase Max. Torque Value



Decrease Max. Torque Value

- Note:**
- The "Unit Selection" is in sequential.

TRACK MODE OPERATION



Max. Target Value



Current Torque Value



Over 80% of Max. Target Value



Current Torque Value



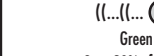
Approach Max. Set Torque



Approach Max. Set Torque



Approach Max. Set Torque



Approach Max. Set Torque



Approach Max. Set Torque



Approach Max. Set Torque



Approach Max. Set Torque

- Note:**
- If **Er0** is appeared, that means this wrench has ever been applied over than 110% of maximum torque.
 - When using track mode, if you apply torque over 5 N.m, the LCD display will start to display the torque value. If the applied is less than 5 N.m, the LCD display does not have any value changes. The smallest torque for E.316-300 series is 0.5 N.m.
 - The green LED will be on for 80%, 85%, 90%, 95% and 97.5% of maximum setting torque.
 - The red LED will be on 99.5% of maximum setting torque.

PEAK HOLD MODE OPERATION



Max. Target Value



Current Max. Value (Peak Hold)



Approach Max. Target Value



Approach Max. Target Value



Approach Max. Target Value



Approach Max. Target Value



Approach Max. Target Value



Approach Max. Target Value



Approach Max. Target Value



Approach Max. Target Value



Approach Max. Target Value



Approach Max. Target Value



Approach Max. Target Value



Approach Max. Target Value

- Note:**
- If **Er0** is appeared, that means this wrench has ever been applied over than 110% of maximum torque.
 - If **Full** is appeared, that means the wrench's memory is full and the next value record can not be written in. Please refer the "Peak Hold Mode Recorded Value Review" section to clear the memory data.
 - The green LED will be on for 80%, 85%, 90%, 95% and 97.5% of maximum setting torque.
 - The red LED will be on for 99.5% of maximum setting torque.

PEAK HOLD MODE RECORDED VALUE REVIEW



Peak Hold/Track Mode



Set Peak/Track Mode



Record No.



Record No.



Clear Record



Deleted



Clear Record



Peak Hold/Track Mode



Peak Hold/Track Mode



Peak Hold/Track Mode



Peak Hold/Track Mode



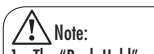
Peak Hold/Track Mode



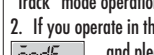
Peak Hold/Track Mode



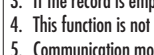
Peak Hold/Track Mode



Peak Hold/Track Mode



Peak Hold/Track Mode



Peak Hold/Track Mode



Peak Hold/Track Mode

- Note:**
- The "Peak Hold" mode recorded value review also can be operated in "Track" mode operation.
 - If you operate in the "Peak Hold" mode, the display will show **nonE** and please go to next step.
 - If the record is empty, it will show **nonE**.
 - This function is not supported on all type of models.
 - Communication mode is for uploading record data to PC.
 - Communication mode is also for calibration of torque wrench. Please contact your local dealer for more information.

KEY LOCK



Lock on/off selection



Lock on/off selection



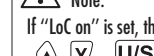
Lock on/off selection



Lock on/off selection



Lock on/off selection



Lock on/off selection



Lock on/off selection



Lock on/off selection



Lock on/off selection



Lock on/off selection



Lock on/off selection



Lock on/off selection



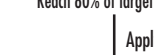
Lock on/off selection



Lock on/off selection



Lock on/off selection



Lock on/off selection



Lock on/off selection



Lock on/off selection

- Note:**
- If "LoC on" is set, the display will show **LoC** while pressing **(U/S)**.

ANGLE MODE OPERATION



Angle Mode



Set Peak/Track Mode



Flashing



Current Angle



Current Angle



Current Torque



Current Angle



Current Angle



Current Torque



Current Angle



Current Torque



Current Angle



Current Torque



Current Angle



Current Torque

- Note 2:**
- When entering angle mode, the unit will be Degree.
 - When angle is in auto initial mode, please keep the wrench steady without any disturbance.
 - After a while, the angle function will be in initiative mode with the flashing **LoC**.
 - When loosening the wrench with angle mode, the display will show the corresponding torque value with flashing state.
 - The Green LED will be on with 80%, 85%, 90%, 95% and 97.5% of target degree.
 - When reaching the target degree, the green and red LED will be on at the same time.

TORQUE UNIT SELECTION UNDER ANGLE MODE



Angle Mode



Set Peak/Track Mode



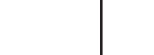
Pre-setting Unit: N-m



Pre-setting Unit: in.lb



Pre-setting Unit: ft.lb



Pre-setting Unit: kg.cm



Pre-setting Unit: kg.cm



Pre-setting Unit: kg.cm



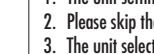
Pre-setting Unit: kg.cm



Pre-setting Unit: kg.cm



Pre-setting Unit: kg.cm



Pre-setting Unit: kg.cm



Pre-setting Unit: kg.cm



Pre-setting Unit: kg.cm



Pre-setting Unit: kg.cm



Pre-setting Unit: kg.cm



Pre-setting Unit: kg.cm

- Note:**
- The unit setting could be also entered from the torque mode.
 - Please skip the procedure and go to next step.
 - The unit selection is cyclic